



**The Los Angeles Trust
for Children's Health**
Data xChange



The Impact of
**School-Based
Health Centers**

2023

Table of Contents

INTRODUCTION

1. Title page
2. Contents page
3. About The Los Angeles Trust for Children’s Health
4. Message from the Executive Director

WELLNESS CENTER AND SCHOOL-BASED HEALTH CENTER DATA

6. Wellness Centers and School-Based Health Centers Directory
7. Demographics
8. Patient Visits
9. Student and Community Health Services
11. Oral Health in 2021-2022
12. Changes in visits to Wellness Centers
14. Recommendations for School-Based Health Integration based on the data

DATA BY BOARD DISTRICT

15. Data xChange and The L.A. Unified Board
16. District 1
17. District 2
18. District 3
19. District 4
20. District 5
21. District 6
22. District 7
23. References

ACKNOWLEDGMENTS

24. Funders and Expert Advisory Council members
25. Clinic partners

The Los Angeles Trust for Children's Health & School-Based Health Centers in LAUSD

The Data xChange is the first database in the country to integrate student health data with academic data such as attendance, grades, and graduation rates.

Since 2009, Los Angeles Unified School District has strategically invested a portion of funds from school construction bonds to build 19 full-service medical clinics on school campuses known as Wellness Centers. These Wellness Centers are located in the highest need areas of Los Angeles and are open to students, their families, and community members – regardless of their ability to pay.

As a long-standing partner of the Los Angeles Unified School District, The Los Angeles Trust for Children's Health (The L.A. Trust) was asked by the District to recruit and support non-profit healthcare companies to run the Wellness Centers and to ensure student health needs are being met.

The 19 Wellness Centers are part of a broader school-based health center network and represent 19 of approximately 75 school-based health centers (SBHCs) in the Los Angeles Unified School District.

Since 2016, The L.A. Trust has raised over \$2 million for the development of the Data xChange. The Data xChange is a HIPAA/FERPA compliant database and centralized reporting environment that quantifies the impact of the Wellness

Centers and SBHCs, improves data-driven resource allocation for LAUSD, and supports research that answers questions about the connections between student health and academic achievement.

The Data xChange is the first database in the country to integrate student health data with academic data such as attendance, grades, and graduation rates. It generates individual school site reports that can help students and principals drive health campaigns and inform budgeting. The database is designed to be interoperable with other systems and can seamlessly integrate with electronic health systems. Additionally, the Data xChange only reports aggregated data, so individual health or academic results cannot be identified.

The Data xChange has grown beyond the 19 Wellness Centers and includes data from other SBHCs across LAUSD; at the end of the 2021-2022 school year, there were a total of 22 Wellness Centers and SBHCs participating in the Data xChange. We look forward to including all SBHCs in LAUSD and beyond going forward.

Executive Director

Message

The Data xChange connects the dots by confidentially intersecting a student's health record with their academic record, allowing us to see how healthcare access influences a student's ability to stay in school.



Maryjane Puffer
Executive Director

Measuring impact is a crucial first step in driving systems improvement. It is with this thesis that the Data xChange reporting system was conceived. The L.A. Trust is proud to spearhead this data collection initiative in collaboration with the Los Angeles Unified School District and the communities we serve. We look forward to expanding the number of reporting health centers and will continue working towards a more data-rich, comprehensive reporting system that empowers administrators to make informed decisions on servicing the health of our students and our communities.

The number of clinics on L.A. Unified campuses participating in The L.A. Trust Data xChange has more than doubled since 2015. Today that number includes 15 Wellness Centers and 8 other school-

based health centers located in under-served communities. The system has grown and for good reason. The Data xChange connects the dots by confidentially intersecting a student's health record with their academic record, allowing us to see how healthcare access influences a student's ability to stay in school in real-time.

We have learned that one Wellness Center visit, particularly for a mental health need, can improve students' attendance over time. This translates to additional seat time. If a child cannot see or hear properly, has dental pain, has asthma or diabetes, or is experiencing trauma or grief, that child's performance in school will be impaired. This is preventable. We can do something about it through school-based health care.

In addition to this report, Wellness Center Report Cards are provided to the principals, clinics, students and parents. The information in those report cards provide a data-driven snapshot of how many students are being served, what services are being accessed, and how often.

Students can use the data to advocate for improved access to health services and to address specific health concerns that are prevalent on their campus. For example, if there are high rates of asthma, students can suggest that their campus partner with an air quality program.

Principals can use the information to ensure that students are accessing the health services provided, work with their Student Advisory Board to direct health campaigns and promote the services to parents and families.

Clinic managers can review the service delivery data to ensure that quality care is being provided. Clinicians can review care protocols for young people to include STI, substance use, and depression screening. They can meet with the school administration and work with their school's Wellness Coordinating Council to align integration strategies.

Today, over \$8 billion is being invested in whole child wellness in California through the Child and Youth Behavioral Health Initiative, the Community Schools effort,

and Peer-to-Peer program investments. Together, we have a huge opportunity and responsibility to uplift our communities by ensuring our students and families are healthy and well. We can do this by linking arms with schools, the healthcare community, students, and families to use the data to chart our course.

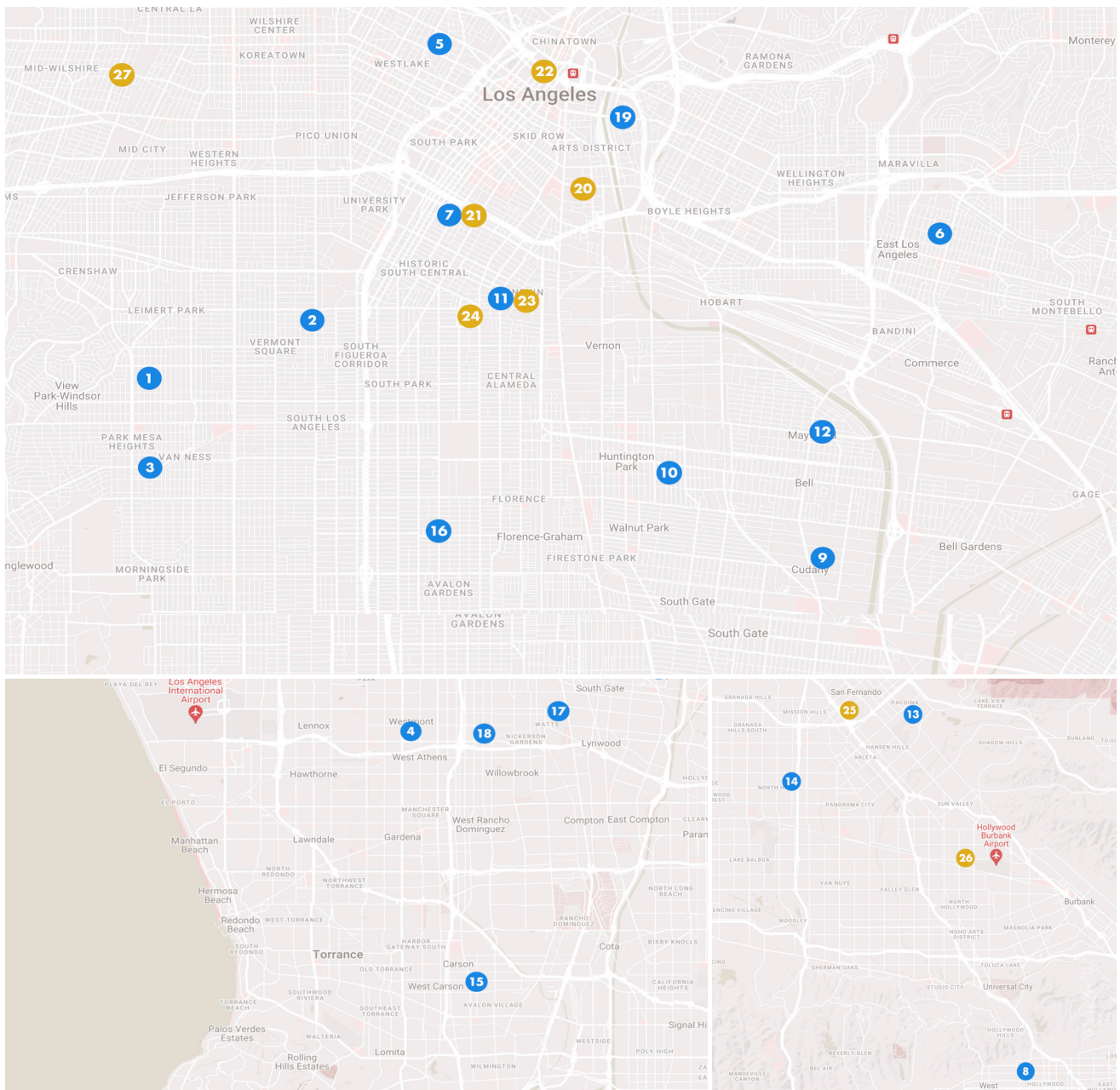
The Data xChange reporting system continues to evolve, and we are thankful for the valuable feedback from students, principals, providers, parents, Superintendent Carvalho, and our Expert Advisory Council. On behalf of The L.A. Trust staff, board and Data xChange team, we are honored to support our collective efforts to bridge health and education toward student success.

Onward!



Maryjane Puffer

Wellness Centers and School-Based Health Centers Directory



Wellness Centers

1. Crenshaw High School WC*
2. Manual Arts High School WC*
3. Hyde Park WC*
4. Washington Prep WC*
5. Belmont High School WC
6. Garfield High School WC*
7. Santee Educational Complex WC*
8. Hollywood High School WC*
9. Elizabeth Learning Center WC*
10. Gage WC
11. Jefferson High School WC*
12. MaCES WC
13. Maclay Health Center for Children WC*
14. Monroe High School WC

15. Carson High School WC*
16. Fremont High School WC*
17. Jordan High School WC*
18. Locke Early Education WC*
19. Sylvia Mendez WC

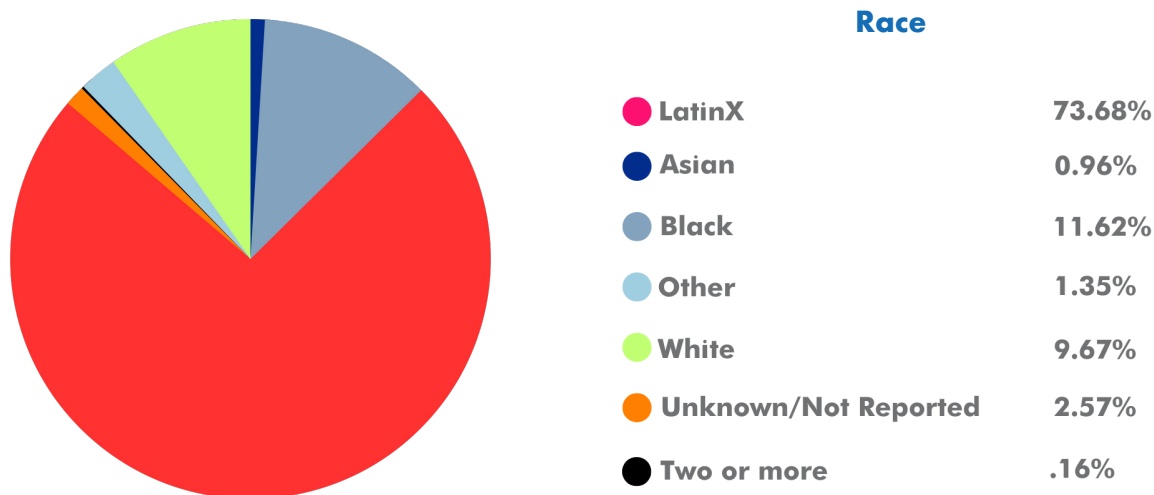
School-Based Health Centers

20. Metropolitan High School SBHC*
21. San Pedro Elementary*
22. Lincoln High School SBHC*
23. Nevin Elementary School Dental Clinic*
24. Wadsworth Avenue Elementary*
25. San Fernando High School Teen Health Center*
26. Sun Valley Health Center*
27. Los Angeles High School SBHC*

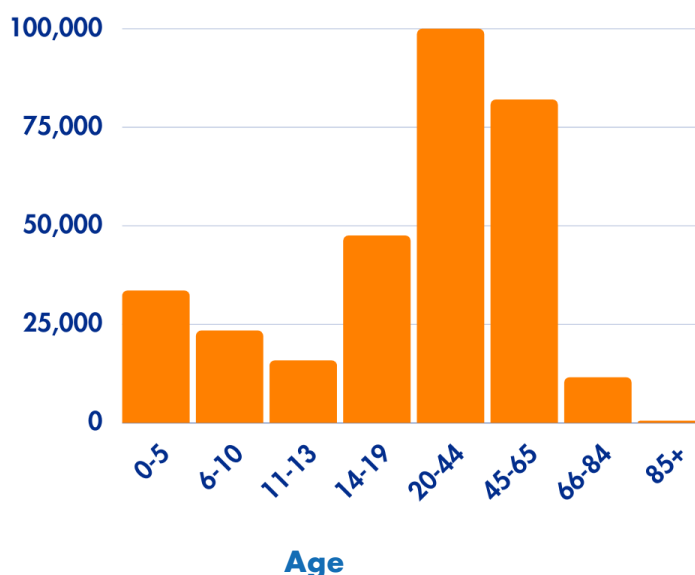
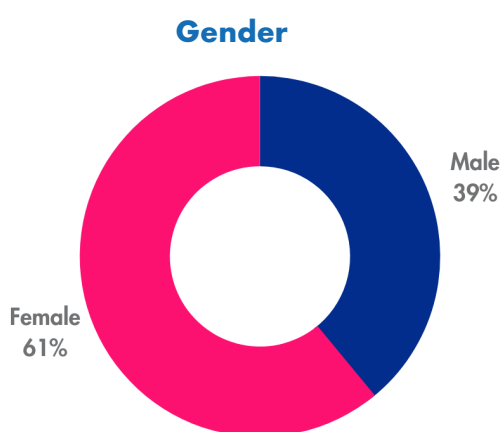
*WC & SBHC data included in report.

Demographics 2015 - 2022

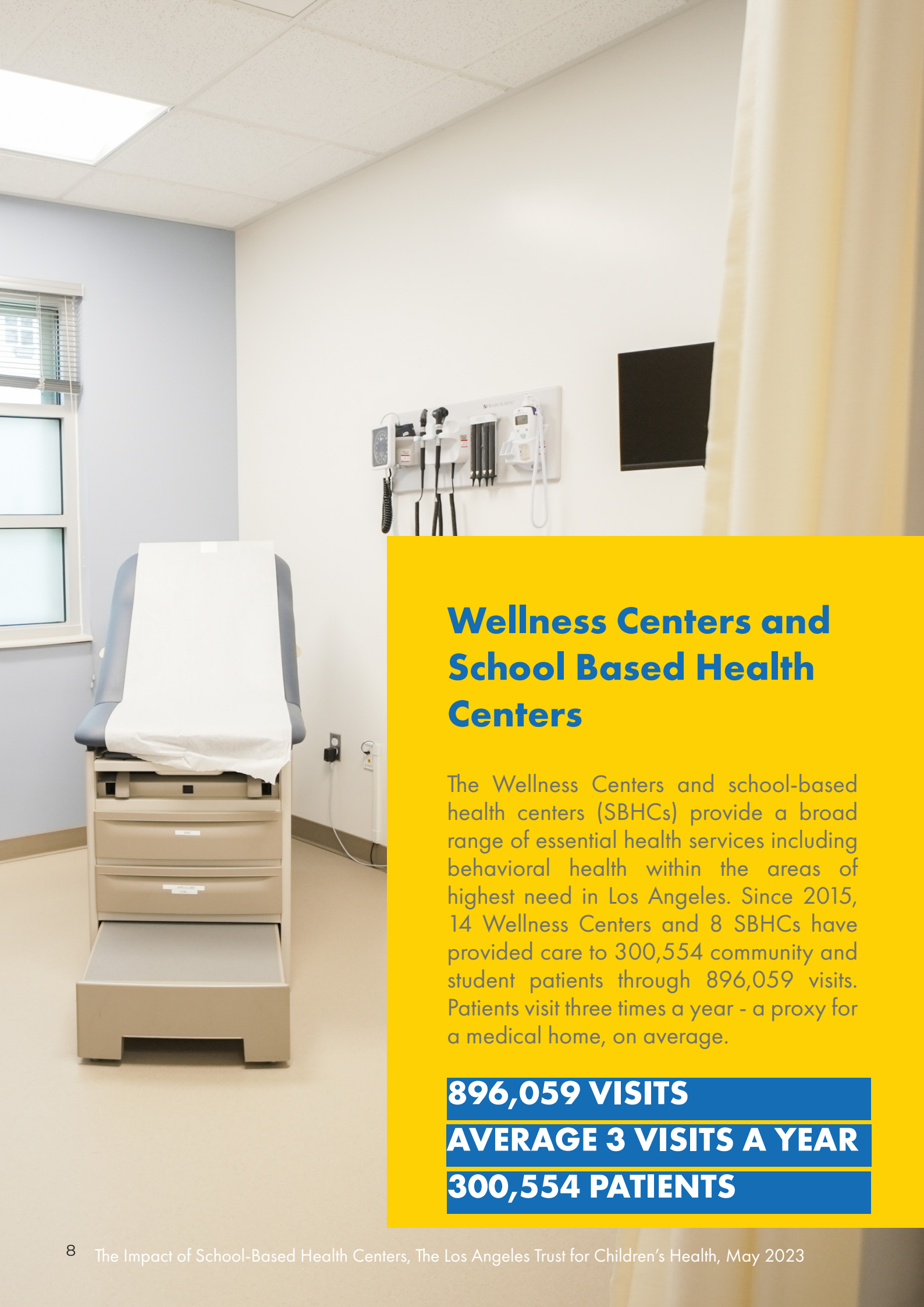
Wellness Centers are specifically designed to serve not just students, but their families and community members too. These clinics serve a diverse population and are deeply committed to health equity - they turn away no one.



Latinx patients made up the largest proportion of patients. This reflects LAUSD's student population - 74% of students enrolled in LAUSD schools in the 2021-2022 school year were Latinx.



Wellness Centers provide intergenerational care to families and community members, while SBHCs primarily serve students ages 16-19. More females visit the Wellness Centers and SBHCs than males.



Wellness Centers and School Based Health Centers

The Wellness Centers and school-based health centers (SBHCs) provide a broad range of essential health services including behavioral health within the areas of highest need in Los Angeles. Since 2015, 14 Wellness Centers and 8 SBHCs have provided care to 300,554 community and student patients through 896,059 visits. Patients visit three times a year - a proxy for a medical home, on average.

896,059 VISITS

AVERAGE 3 VISITS A YEAR

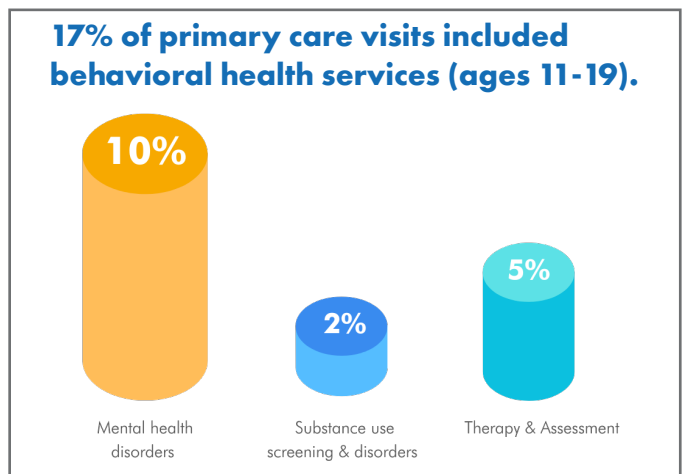
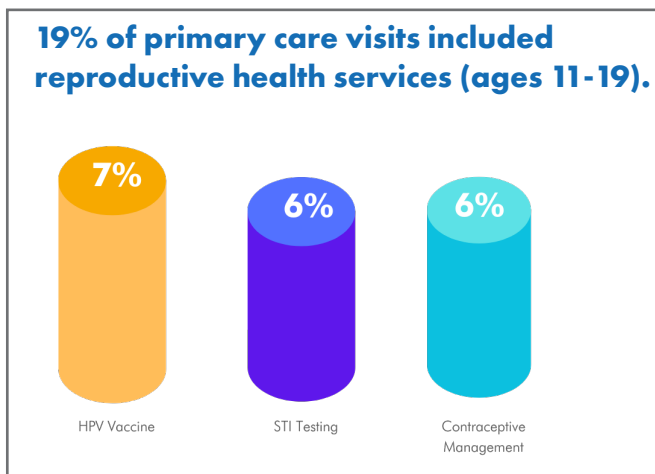
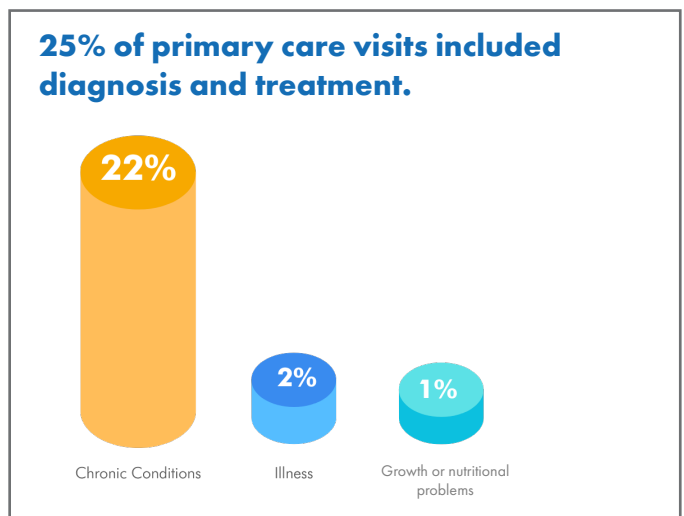
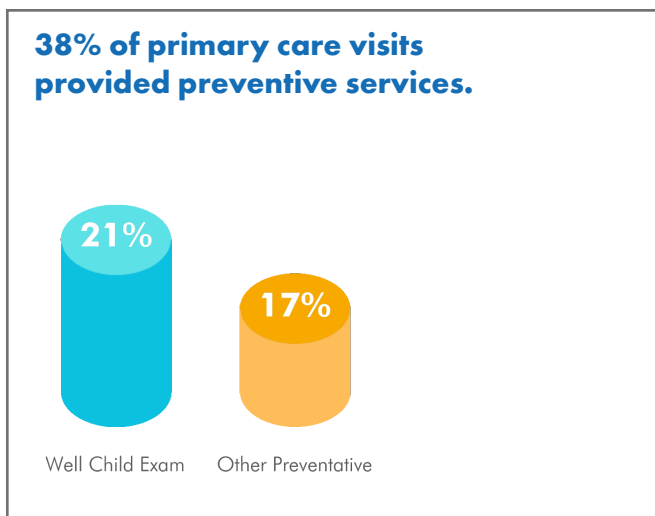
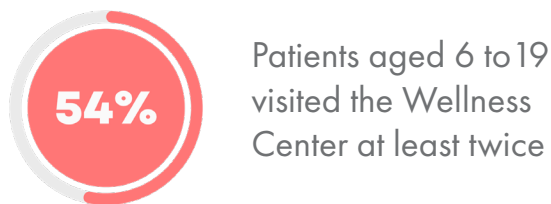
300,554 PATIENTS



The Wellness Centers serve LAUSD's most vulnerable populations, including children in the foster care system and those without housing.

Primary Care and Behavioral Health Services for Student-Age Patients in 2021-2022

The Wellness Centers and SBHCs provide primary care services to students, focusing on prevention, education, early intervention, and screening to promote student well-being and academic achievement. For many students, the Wellness Centers serve as their medical home. During 2021-2022, 54% of student-age patients 6 to 19 visited the Wellness Center twice and 41% received their annual well-child exam at the Wellness Centers. Children in the foster care system make up 1.3% of the LAUSD population, they make up 2% of the LAUSD students who use the Wellness Centers. Similarly, 2.4% of LAUSD students are without housing and they make up 3.9% of the LAUSD students who use the Wellness Centers.



The Wellness Centers provide a range of essential health services to community members.

This includes patients ages 0-5 and those 20 years and older. During 2021-2022, 56% visited the Wellness Centers two or more times, and 58% of children 0-5 received an annual well-child exam.

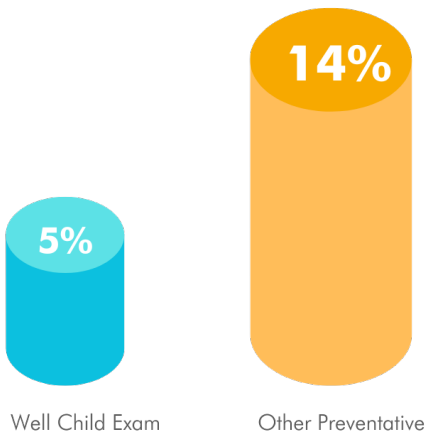


Patients aged 0 to 5, and 20+ visited the Wellness Center at least twice

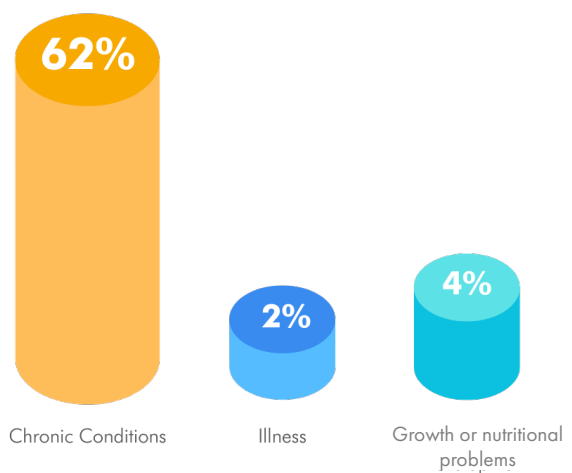


Patients aged 0 to 5 received their annual well-child exam at the Wellness Centers

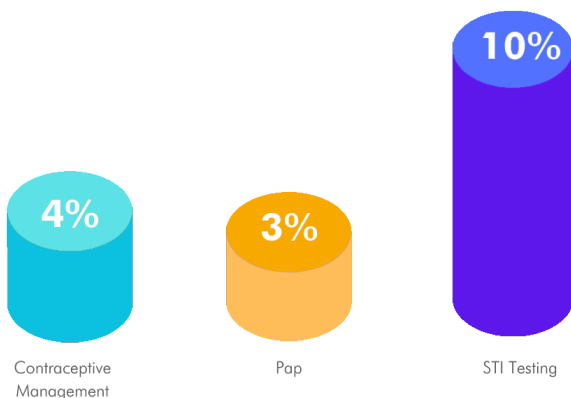
19% of primary care visits provided preventive services.



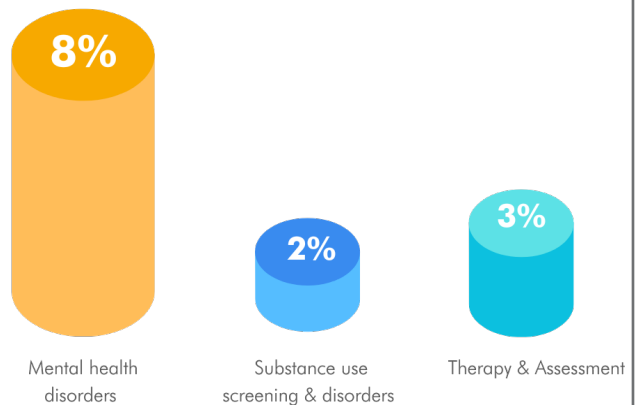
68% of primary care visits included diagnosis and treatment.



17% of primary care visits included reproductive health services (ages 20+).



13% of primary care visits included behavioral health services (ages 20+).

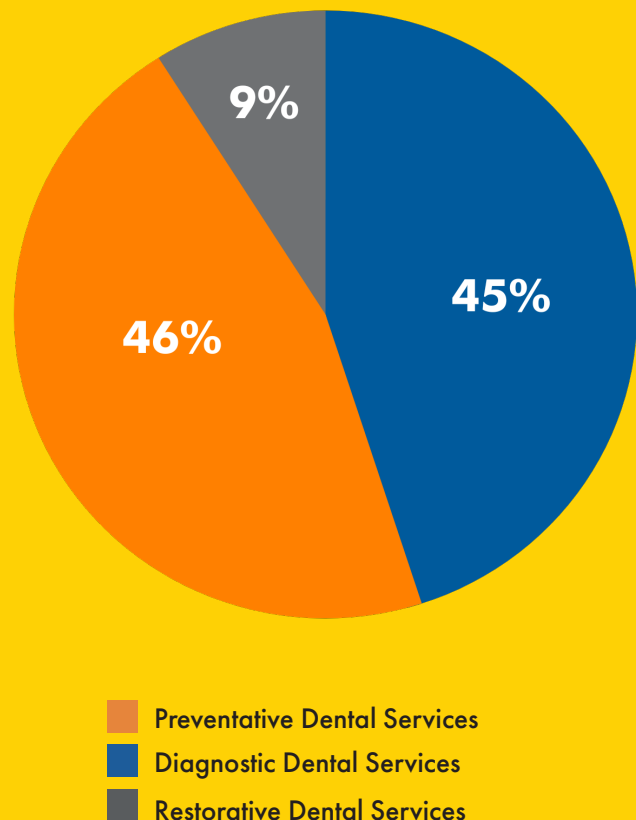


Oral Health in 2021-2022



Since 2015, the Wellness Centers and SBHCs provided almost 175,000 dental care visits. Providing access to dental care is critical; poor oral health is linked to chronic disease in adults¹ and poor academic outcomes and increased absenteeism among students.² In 2021-2022, 6 Wellness Centers and 2 SBHCs provided dental care to over 12,000 students and community members through 27,527 visits.

Percent of Visits by Types of Dental Services



12,308 PATIENTS

27,527 VISITS



32% OF PATIENTS ARE STUDENTS

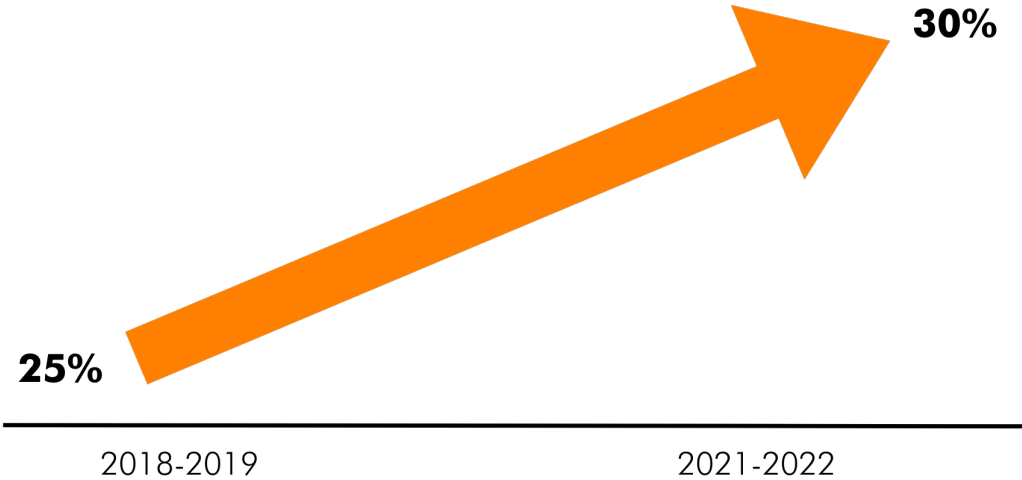
2.2 AVERAGE VISITS PER PATIENTS

Increase in number of visits to Wellness Centers

Over the past two years, the number of visits has increased and is back to the number of visits seen pre-COVID. During the 2021 - 2022 year, the Wellness Centers and SBHCs that were operating served patients through **152,883 visits** compared to **142,414 visits** in 2018-2019.

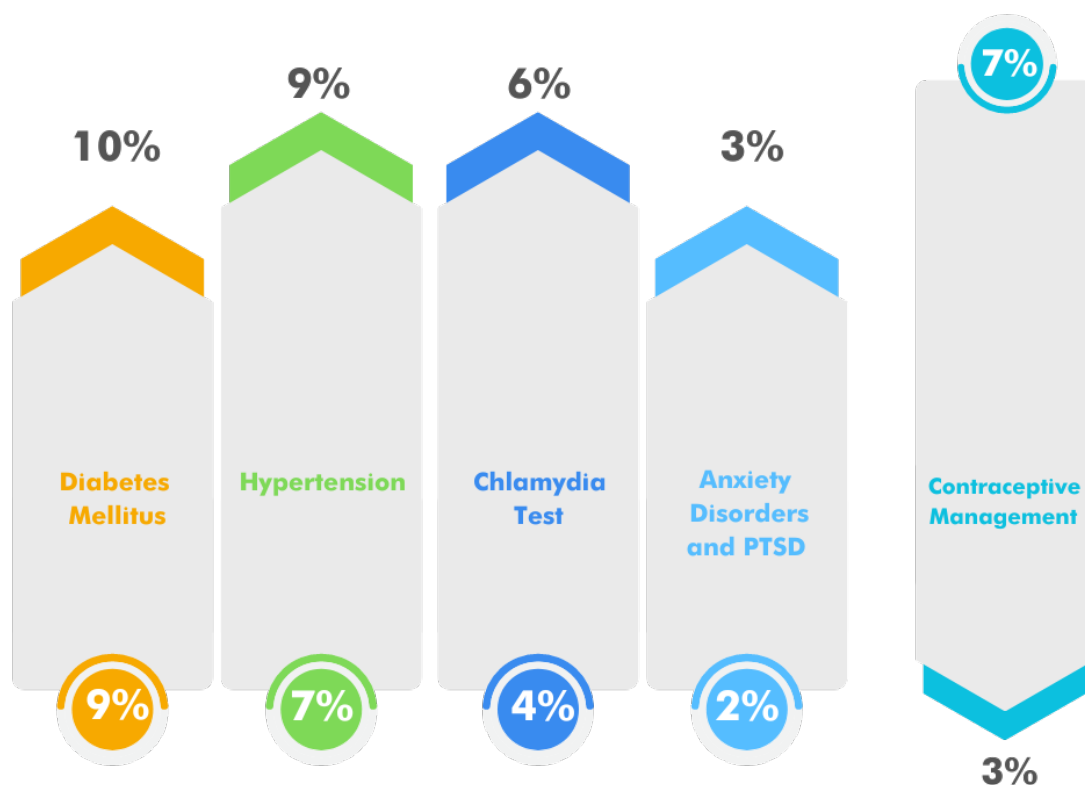
The proportion of visits that included a **diagnosis of being overweight or obese had the biggest increase** for both community and student populations. Being overweight or obese is a risk factor for developing certain types of cancers, chronic diseases, and conditions, including diabetes and hypertension.

Diagnosis of overweight and obese increased



Our data shows the proportion of **visits for diabetes and hypertension increased** slightly among adult patients and a small number of students aged 14-19. Additionally, **obesity rates have increased significantly** due to the pandemic;³ rates have increased across the US and worldwide.⁴

Changes in the proportion of all visits for specific types of services from 2018-2019 to the 2021-2022 school year.



The proportion of *visits for contraceptive management decreased*. A decline in visits for contraceptives and reproductive health occurred throughout the US because of the pandemic, and the effects have persisted in 2021 indicating that the number of visits and access to care in many states is not back to pre-COVID level.⁵ Clinics nationwide are implementing strategies to decrease patients' barriers to services.⁶

The proportion of *visits for chlamydia screening increased* among all visits and among our target population. In 2021-2022, 60% sexually active young people were screened compared to 55% in 2018-2019. According to the CDC, chlamydia screenings decreased in the months following the start of the pandemic but preliminary national data from 2021 shows an increase in STI screening and diagnosis.⁷

The proportion of visits with *diagnoses of anxiety disorders and post-traumatic stress disorder (PTSD) increased*. The increase was greater among community members when compared to students. This is not surprising given that increases in anxiety, depression, and substance use have been reported nationally.⁸

Recommendations for School-Based Health Integration based on the Data

1

Work with school administrators and mental health counselors to identify and refer students who may benefit from care at the Wellness Centers. Chronic absenteeism may be related to physical health, mental health, or social factors, and addressing these needs can help improve attendance and academic outcomes.

2

Given the rise in obesity and pre-diabetic conditions in children and community members post-COVID, engage in more partnerships with community organizations and school programs to promote healthy eating and active living programs.

3

Increase efforts to provide access to contraceptives and improve screening for chlamydia, depression, and substance use among students.

4

Compare the demographics of the school population, including foster youth, English language learners, and students experiencing homelessness, to the total number of students being served by the Wellness Centers and SBHCs.

5

Develop and distribute detailed report cards to students, parents, clinic managers, and school sites to help them better understand available health resources, advocate for themselves, and engage in local health programs, including insurance coverage.



The Los Angeles Unified School District Board

The Los Angeles Unified School District Board of Education plays a critical role in providing leadership and advocating for children and schools. The board ensures that the school district is responsive to the needs and values of the community. To improve access to care for all families and students, board members should visit their Wellness Centers, meet the Student Advisory Board leaders, and promote

services through their social media and newsletters. The L.A. Trust will meet with all board members to review local district data to support a deeper understanding of the impact this investment has made on the lives of LAUSD families. For a more complete picture of student health, data from LAUSD's clinics need to be integrated into the Data xChange.



George Mckenna

LAUSD Board District 1



Rocio Rivas

LAUSD Board District 2



Scott Schmerelson

LAUSD Board District 3



Nick Melvoin

LAUSD Board District 4



Jackie Goldberg

LAUSD Board District 5



Kelly Gonez

LAUSD Board District 6

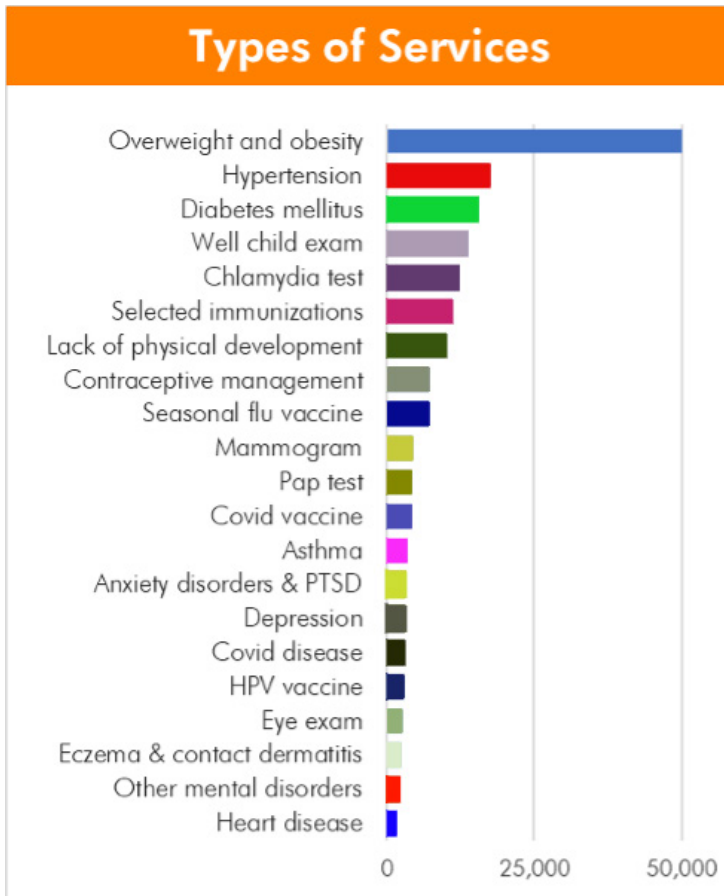


Tanya Ortiz Franklin

LAUSD Board District 7

School-Based Health Center impact July 2015-June 2022

**LAUSD Board District 1
George McKenna**



279,629 VISITS

108,186 PATIENTS



**Average Visits
Per Patient**

19% of patients are students

Clinics in Data xChange:

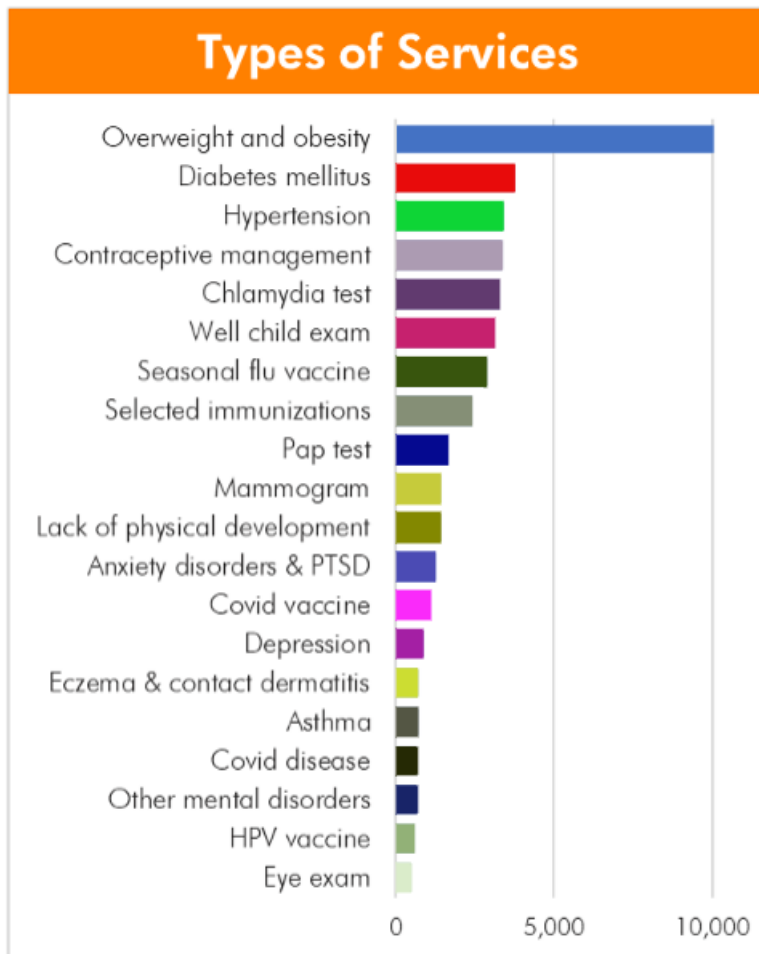
Crenshaw High WC
Hyde Park WC
Los Angeles High Teen Clinic
Manual Arts WC
Washington PrepWC

Clinics to add:

97th Street Mental Health Clinic
Dorsey High

School-Based Health Center impact July 2015-June 2022

**LAUSD Board District 2
Rocio Rivas**



67,641 VISITS

22,871 PATIENTS



**Average Visits
Per Patient**

22% of patients are students

Clinics in Data xChange:

- Garfield WC
- Lincoln High
- Metropolitan High
- San Pedro Elementary
- Santee WC

Clinics to add:

- 2nd Street Elementary
- 9th Street Elementary
- Accelerated School
- Belmont WC
- Hilda Solis Dental Clinic
- Mendez WC*
- Michael Godfrey
- Roosevelt High*

*Wellness Center recently opened or opening soon.

School-Based Health Center impact July 2015-June 2022

LAUSD Board District 3 Scott Schmerelson

Clinics in Data xChange:

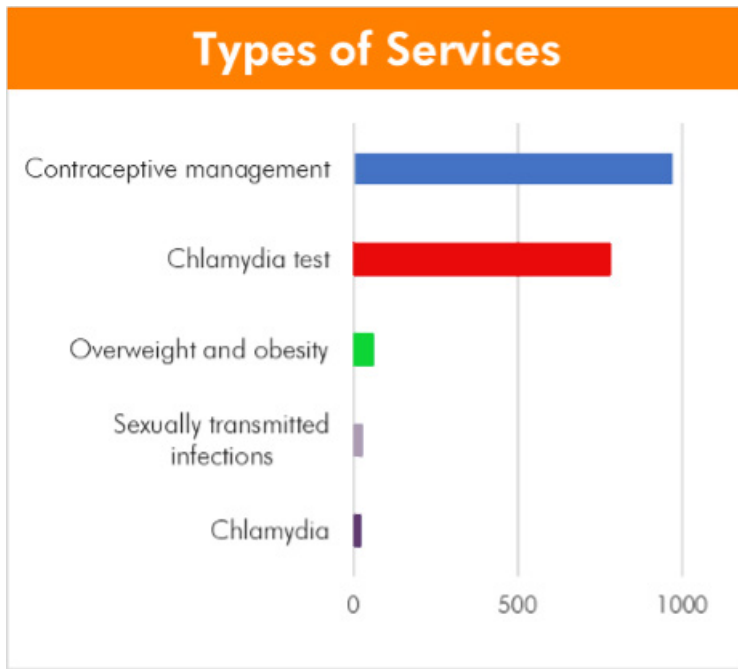
Board District 3 has no clinics currently participating in The L.A. Trust Data xChange.

Clinics to add:

Columbus Middle School Health Center
Lawrence Middle School Family Health Center
Kennedy High School-Based Health Center

School-Based Health Center impact July 2015-June 2022

**LAUSD Board District 4
Nick Melvoin**



2,248 VISITS

974 PATIENTS



**Average Visits
Per Patient**

100% of patients are students

Clinics in Data xChange:

Hollywood Wellness Center Data includes sexual and reproductive health services provided by Planned Parenthood.

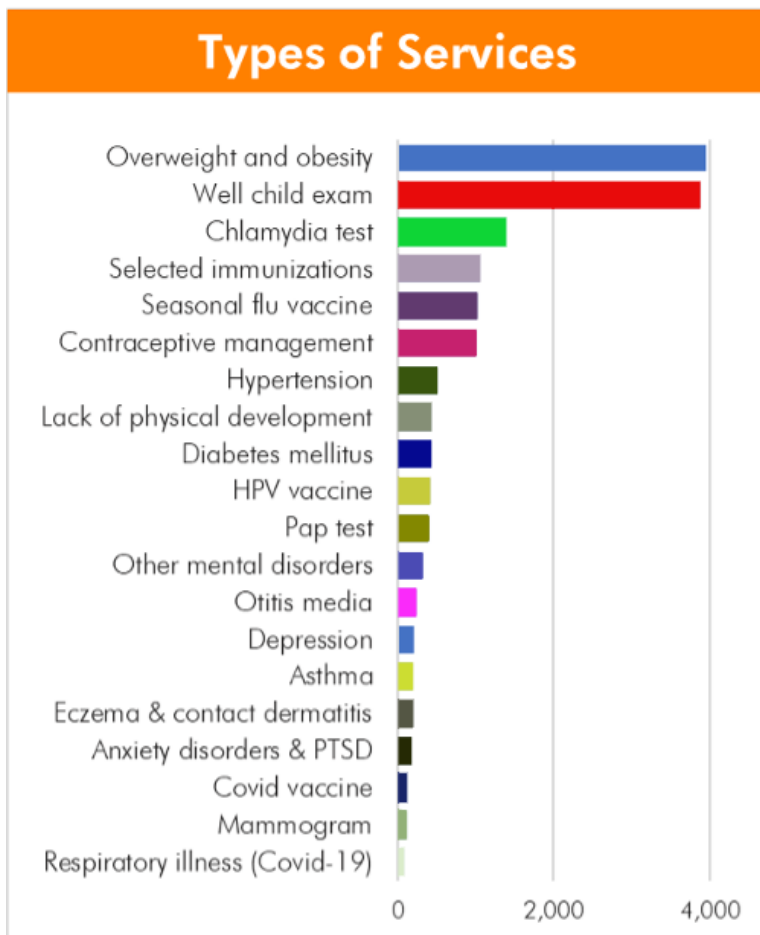
Co-located with LAUSD clinical providers' data housed in Welligent is not in the Data xChange.

Clinics to add:

District 4 has no other clinics to enroll.

School-Based Health Center impact July 2015-June 2022

**LAUSD Board District 5
Jackie Goldberg**



40,812 VISITS

16,377 PATIENTS

2.5

**Average Visits
Per Patient**

36% of patients are students

Clinics in Data xChange:

Jefferson WC
Nevin Ave. Elementary
Wadsworth Ave. Elementary
Wellness Center at Elizabeth
Learning Center

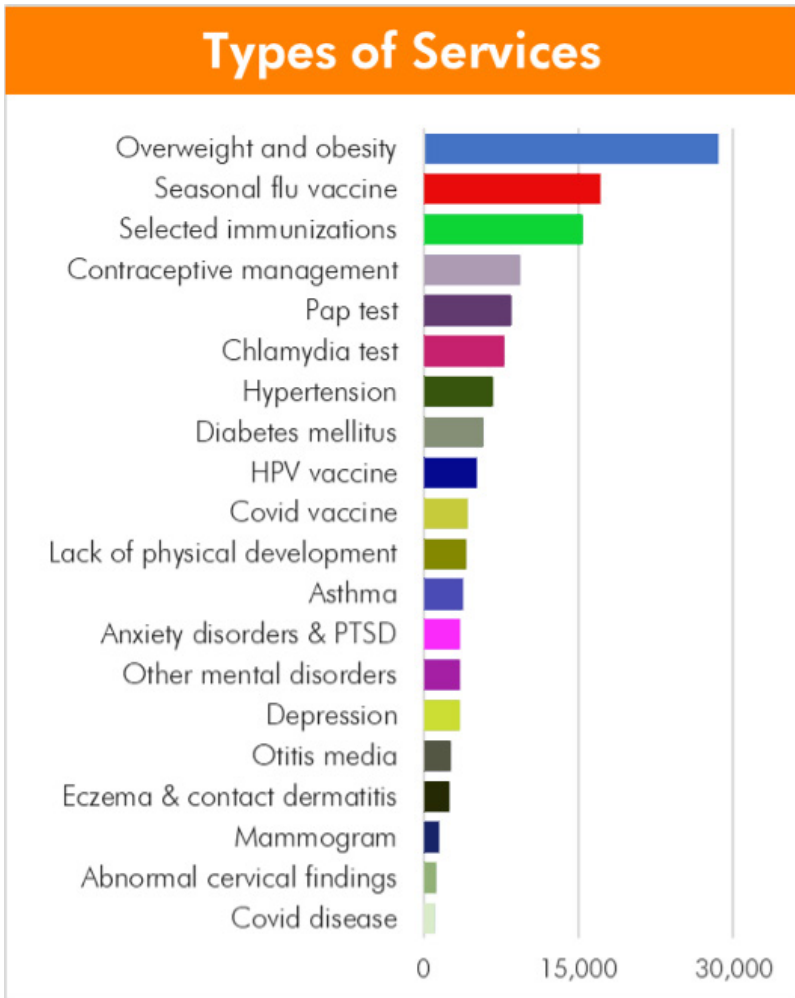
Clinics to add:

Bell Cudahy
Gage Middle
Holmes Ave. Elementary
Marshall High
MaCES WC*
San Miguel Health Start

*Wellness Center
recently reopened.

School-Based Health Center impact July 2015-June 2022

LAUSD Board District 6
Kelly Gonez



398,341 VISITS

111,275 PATIENTS



**Average Visits
Per Patient**

39% of patients are students

Clinics in Data xChange:

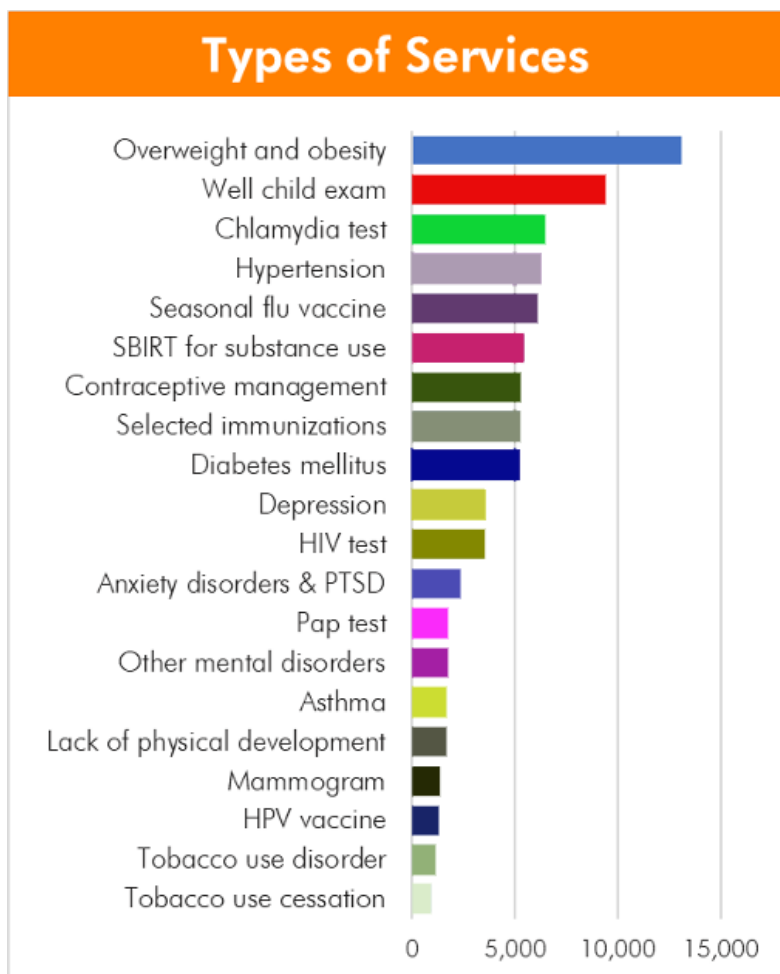
Maclay WC
San Fernando High
Sun Valley

Clinics to add:

Monroe High's North Hills WC
Pacoima Middle

School-Based Health Center impact July 2015-June 2022

LAUSD Board District 7
Tanya Ortiz Franklin



107,380 VISITS

40,811 PATIENTS

2.6

**Average Visits
Per Patient**

31% of patients are students

Clinics in Data xChange:

Carson WC
Fremont WC
Jordan WC *
Locke EEC WC *

Clinics to add:

Cabrillo Elementary
Garden High

*Wellness Center
closed as of 2020.

References

1. Centers for Disease Control and Prevention. (2022, April 6). Oral Health Conditions. Centers for Disease Control and Prevention. Retrieved March 24, 2023, from <https://www.cdc.gov/oralhealth/conditions/index.html>
2. Seirawan, H., Faust, S., and Mulligan, R., 2012: The Impact of Oral Health on the Academic Performance of Disadvantaged Children American Journal of Public Health 102, 1729_1734, <https://doi.org/10.2105/AJPH.2011.300478>
3. Boutari, C., & Mantzoros, C. S. (2022). A 2022 update on the epidemiology of obesity and a call to action: As its twin covid-19 pandemic appears to be receding, the obesity and dysmetabolism pandemic continues to rage on. *Metabolism*, 133, 155217. <https://doi.org/10.1016/j.metabol.2022.155217>
4. Jha, S., & Mehendale, A. M. (2022). Increased incidence of obesity in children and adolescents post-covid-19 pandemic: A review article. *Cureus*. <https://doi.org/10.7759/cureus.29348>
5. Covid-19 has disrupted access to birth control in several US states, new study finds. Guttmacher Institute. (2022, September 2). Retrieved from <https://www.guttmacher.org/news-release/2022/covid-19-has-disrupted-access-birth-control-several-us-states-new-study-finds>
6. Briggs, S., Logan, D., Solomon, B., Kim, L., & Manlove, J. (2022). Title X provider strategies to increase client access to family planning services. Bethesda, MD: Child Trends. <https://doi.org/10.56417/6167v6800m>
7. Centers for Disease Control and Prevention. (2022, September 1). Preliminary 2021 STD surveillance data. Centers for Disease Control and Prevention. <https://www.cdc.gov/std/statistics/2021/default.htm>
8. Nirmita Panchal, H. S., & 2023, M. (2023, March 22). The implications of COVID-19 for mental health and substance use. Kaiser Family Foundation. <https://www.kff.org/coronavirus-covid-19/issue-brief/the-implications-of-covid-19-for-mental-health-and-substance-use/>

Acknowledgments

Data xChange funders

- The Ahmanson Foundation
- Blue Shield of California Foundation
- California Health Care Foundation
- Cedars-Sinai Medical Center
- DentaQuest Partnership for Oral Health Advancement
- Essential Access Health
- Max Factor Family Foundation
- Harbor Community Benefit Foundation
- Kaiser Permanente
- W. M. Keck Foundation
- L.A. Care Health Plan
- Ralph M. Parsons Foundation
- Sorenson Impact Center

Expert Advisory Council Members

- Advancement Project
- California School-Based Health Alliance
- Common Spirit
- Community Clinic Association of LA County
- Community Coalition
- Community Health Councils, Inc.
- First 5 Los Angeles
- Gina Airey Consulting
- Inner City Struggle
- Kaiser Permanente
- L.A. Care Health Plan
- LAUSD Student Health & Human Services
- LAUSD Office of Data & Accountability
- LAUSD Office of the Chief Medical Director
- Los Angeles County Department of Public Health
- Los Angeles County Office of Education
- Prevention Institute
- School-Based Health Alliance (national)
- St. John's Community Health
- The Children's Health Partnership
- UCLA Center for Healthier Children, Families and Communities
- UCLA Pediatric Health Services Research
- Unite-LA

PLUS

All the healthcare providers, educators, and agencies working together to improve student health and school-based healthcare in Los Angeles.

Thank you to our clinic partners



**Northeast Valley
Health Corporation**
a californiahealth+ center



**TO
HELP
EVERYONE**
caring starts here



Data xChange participating clinics:

Carson High
Crenshaw High
Elizabeth Learning Center
Fremont High
Garfield High
Hollywood High
Hyde Park
Jefferson High
Jordan High
Lincoln High
Locke Early Education

Los Angeles High
Maclay Middle School
Manual Arts High
Metropolitan High
Nevin Avenue Elementary
San Fernando Teen Clinic
San Pedro Elementary
Santee Education Complex
Sun Valley Health Center
Wadsworth Elementary
Washington Prep



The Los Angeles Trust for Children's Health

Data xChange

For more information, please contact:
Maryjane Puffer, Executive Director
Maryjane@thelatrust.org

TLAT061523