



# The L.A. Trust School Health Policy Roundtable



**The Los Angeles Trust  
for Children's Health**

Putting the care in student healthcare

# The L.A. Trust School Health Policy Roundtable

**Mission:** Advance collaborative policy solutions that help LA County schools unlock students' full potential by building integrated, youth-centered systems of support for whole child, school, and community wellbeing.

## 2022-24 policy goals

### Goal #1

Expand school-based peer-to-peer programs for behavioral health support across LA County.

### Goal #2

Enable LA County schools to establish integrated systems of support for whole child wellbeing through implementation of the CA Community Schools Partnership Program.

### Goal #3

Advocate strategic implementation of the Children & Youth Behavioral Health Initiative in LA County to establish integrated, youth-driven systems of care in schools.

## Member Organizations

Youth Leaders (individuals)  
Advancement Project  
Alliance for a Better Community  
Belmont Health Center  
APU Department of Psychology  
Center for Supportive Schools  
CA School-Based Health Alliance  
Centinela Youth Services  
LA City Youth Development Dept  
Children's Institute  
Children Now  
Children's Law Center of CA  
Community Clinic Association of LAC  
Community Coalition  
Community Health Councils  
Communities in Schools LA  
Healthnet  
Helpline Youth Counseling  
Essential Access Health  
Kaiser Permanente  
L.A. Care  
LAC Department of Mental Health  
LAC Department of Public Health  
LAC Office of Education  
LA Unified School District  
Office of Hilda Solis  
Office of Janice Hahn  
Planned Parenthood Los Angeles  
Sycamores  
The Children's Partnership  
The L.A. Trust for Children's Health  
UCLA – ISAP  
UNITE-LA  
United Way of Greater LA

# We are in a moment of transformative opportunity

**aces aware**  
SCREEN. TREAT. HEAL.



**\$4.4 Billion**



**\$4 Billion**



**\$33.5 Billion**



**EXPANDED**  
LEARNING OPPORTUNITIES  
**\$4.4 Billion (ongoing)**

**AB 2083: Children and Youth System of Care**





**The L.A. Trust**

## **School Health Policy Roundtable**

We're working to ensure transformative investments in school health go toward building integrated, youth-centered systems of care that help LA youth succeed in school and life.



**The Los Angeles Trust  
for Children's Health**

## Goal #1

Expand school-based peer-to-peer (P2P) programs for behavioral health support across LA County.

We ❤️ peer-to-peer because...

1. Young people are asking for it!
2. Enhances protective factors and resiliency
3. Culturally responsive and adaptable model
4. Mitigates the provider shortage (resource light)
5. Creates workforce pipeline for youth

### Opportunities

- Leverage recent one-time investments and ongoing funding sources to expand P2P
- Embed P2P in LA's emerging Community Schools
- Designate P2P facilitation and support as duties of BH Coach (CYBHI)
- Engage youth leaders in local advocacy with schools



**The Los Angeles Trust  
for Children's Health**

## Goal #2

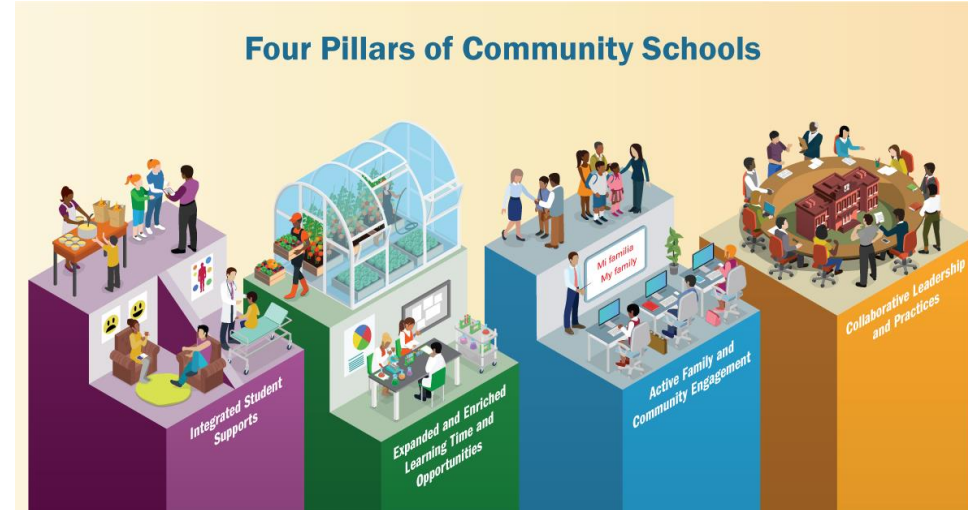
Enable LA County schools to establish integrated systems of support for whole child wellbeing through implementation of the CA Community Schools Partnership Program (CCSPP).

### California's investing \$4.1 billion to grow Community Schools

- Nearly \$105 million granted to LA County schools in 2022 (round 1)
- Grants will help connect students/families to valuable local resources
- Integrated Student Supports pillar ensures student access to health care
- All 4 pillars work together to support whole child wellbeing

### Opportunities

- The L.A. Trust partnering with LACOE to seek CCSPP Regional TA Center contract
- Build infrastructure for authentic student and family engagement
- Grow movement for healing-centered schools through communities of practice
- Enhance data collection and evaluation to advance equity



**The Los Angeles Trust  
for Children's Health**

## Goal #3

Advocate strategic implementation of the Children & Youth Behavioral Health Initiative to establish integrated, youth-driven systems of care in schools across LA county.

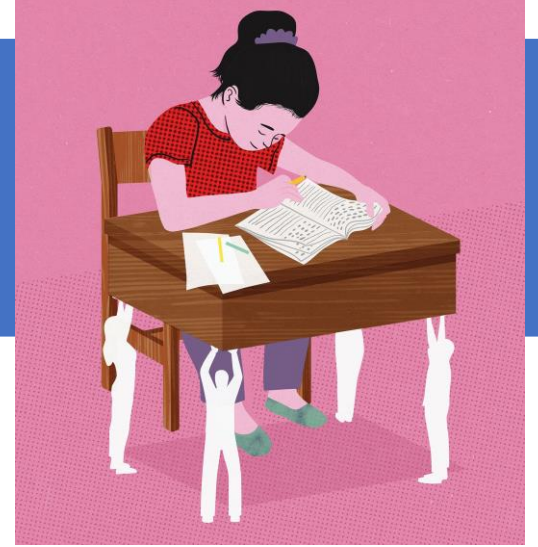
### \$4.4 billion to transform youth-serving behavioral health systems

We're tracking 4 school-based workstreams

- School-linked Partnership & Capacity Grants (~\$150 million for LA County)
- Statewide School-linked Fee Schedule
- Behavioral Health Coach
- Student Behavioral Health Incentive Program (~\$125 million for LA County)

### Opportunities

- Leverage diverse Roundtable expertise to develop implementation recommendations
- Rethink and redeploy existing resources to sustain one-time investments
- Advance local policies that facilitate successful CYBHI implementation (healing-centered schools)
- Use investments to drive integration between mental health and other student supports



**The Los Angeles Trust  
for Children's Health**

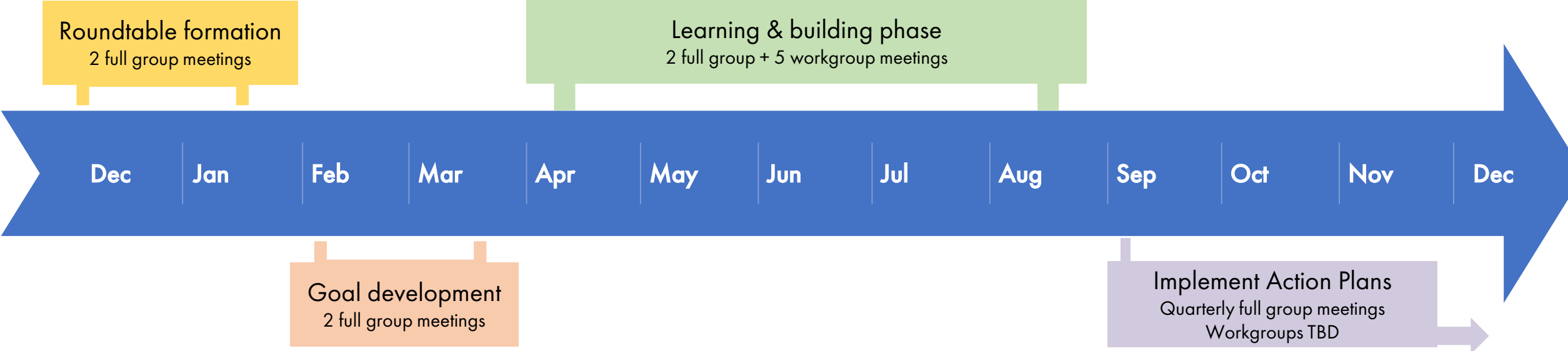
# 2022-2023 Action Plan

<p><b>Goal #1</b> Expand school-based peer-to-peer programs for behavioral health support across LA County.</p>	<p><b>Goal #2</b> Enable LA County schools to establish integrated systems of support for whole child wellbeing through CA Community Schools Partnership Program implementation.</p>	<p><b>Goal #3</b> Advocate strategic implementation of the Children &amp; Youth Behavioral Health Initiative to establish integrated, youth-driven systems of care in schools across LA county.</p>
<p><b>Shared objectives</b></p>		
<p><b>Objective 1.1/2.2 (Peer support &amp; Community Schools)</b> By December 2022, develop and execute engagement plan with LA County CCSPP grantees to understand current school practices, plans, and needs around whole school health integration and peer-to-peer programming.</p> <p><b>Objective 2.1/3.1 (Community Schools &amp; CYBHI)</b> By October 2022, send letter to the LA County Board of Supervisors describing need for county-level coordination of resources and partnerships to support implementation of initiatives to support school and student health.</p>		
<p><b>Objective 1.2</b> By June 2023, produce toolkit that guides schools in establishing peer-to-peer programs.</p> <p><b>Objective 1.3</b> By 2024, convene and prepare group of student leaders to uplift the value of peer-to-peer within their school boards and school communities.</p>	<p><b>Objective 2.3</b> By February 2023, develop framework for implementing and evaluating integrated, youth-centered systems of support for student wellbeing to be taught by TA hubs.</p> <p><b>Objective 2.4</b> [dependent on objective 1 outcome] Facilitate formation of a Community Schools Task Force to develop collaborative vision for scaling Community Schools countywide.</p>	<p><b>Objective 3.2</b> By October 2022, develop recommendations for the School-linked Capacity Grants, All-payer Fee Schedule, and BH Coach workstreams and deliver to state agencies.</p> <p><b>Objective 3.3</b> By February 2023, conduct analysis [or seek Board-directed analysis] of local investments in school-based behavioral health and determine what can be better leveraged to sustain CYBHI investments.</p>



# Roundtable timeline

Year 1 | December 2021 – December 2022





If you share our priorities, please contact Gabby to discuss potential collaborations.

Gabby Tilley, Senior Policy Manager

[g.tilley@thelatrust.org](mailto:g.tilley@thelatrust.org)

# Follow us



**@thelatrust**