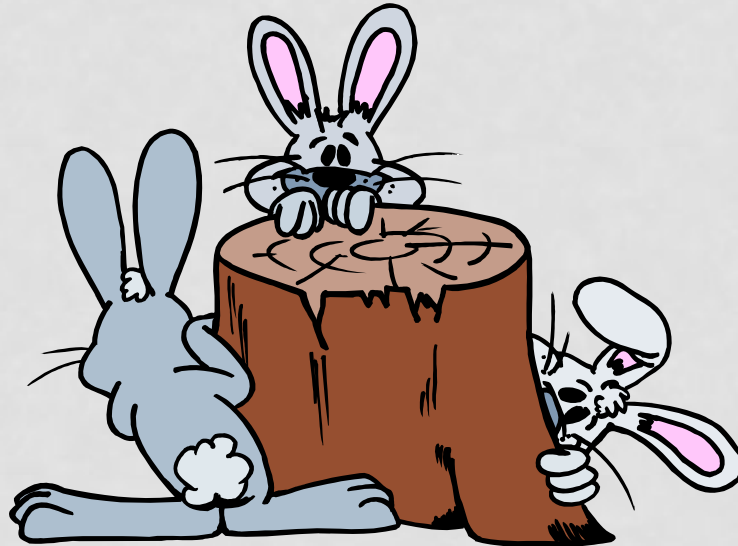


POMONA UNIFIED SCHOOL DISTRICT

HEALTH SERVICES CLINIC



Presenter: Rosalyn Benson, RN, MSN, ACNP

# HEALTH SERVICES CLINIC



Health Services Clinic  
Personnel District School District  
Monday to Friday 8:00am to 4:00pm  
Saturdays 8:00am - 4:00pm  
955 357-4000 ext. 2000  
OPEN  
Immunizations 10:00am - 12:00pm  
Family Practice 10:00am - 12:00pm  
Tuesdays 10:00am - 12:00pm

200



# PUSD FACTS

- Schools: 42
  - High Schools: 6
  - Middle Schools: 6
  - K-8 Schools: 6
  - Elementary Schools: 21
- Pupils: 30,000
- Ethnic Makeup
  - Hispanic 83%
  - African American 6%
  - Asian 6% (25% Filipino)
  - White 4%

# HEALTH SERVICES CLINIC HISTORY

- Funded 1973
- Staff: 1.5 School Nurse Practitioners (NP), 1.5 School Nurses (SN), 1.0 Health Clerk.
- 835 physicals exams (PE) first year.
- 1385 PE 1976-1977 school year.
- Funding Sources:
  - The Child Health and Disability Prevention Program (CHDP) of the State of California
  - Limited Special Education Funds



# BUNNY CLINIC TODAY

- One CHDP Provider Nurse Practitioner
  - PE
  - Sick Calls
  - PE Billings
  - Clinic Operation
- One Licensed Vocational Nurse
  - Immunizations (IZ)
  - Medical Assistant Duties
  - IZ Billings
- One Typist Clerk
  - Front Desk Duties
  - Gateway Medi-Cal
  - Screenings

# OPERATION HOURS

- Monday 8:00 am – 4:30 pm
  - Employee PPD all day
  - Audiology clinic 9:00 am – 12:00 pm
- Tuesday 10:00 am – 6:30 pm
  - IZ clinic walk-in 1:30 – 5:30pm
- Wednesday 8:00 am – 4:30 pm
  - PE 8:00 am – 12:00 pm
  - Head Start Clinic TBA
- Thursday 8:00 am – 4:30 pm
  - IZ clinic walk-in 1:30 – 3:30 pm
  - Employee PPD all day
- Friday 8:00 am – 4:30 pm
  - PE all day

# CHDP PHYSICALS

- CHDP Periodicity Schedule
- Dental Screening
- Vision Screening
- Hearing Audiometry Screening
- Hemoglobin
- Urine Analysis
- Blood Glucose
- Blood Lead
- PPD Skin Test
- Immunization

# RECENT STATISTICS

## 2011 – 2012 School Year

- Before Oct. 2011  
walk-in 200 – 800 monthly
- Immunizations
  - approx. 2,500 visits
  - 3,952 shots
  - 1,304 children
- Physicals – 205 \*
  - 1/3 LAC & HNET
  - 2/3 Medi-Cal & Gateway
- Employee PPD
  - approx. 1,000

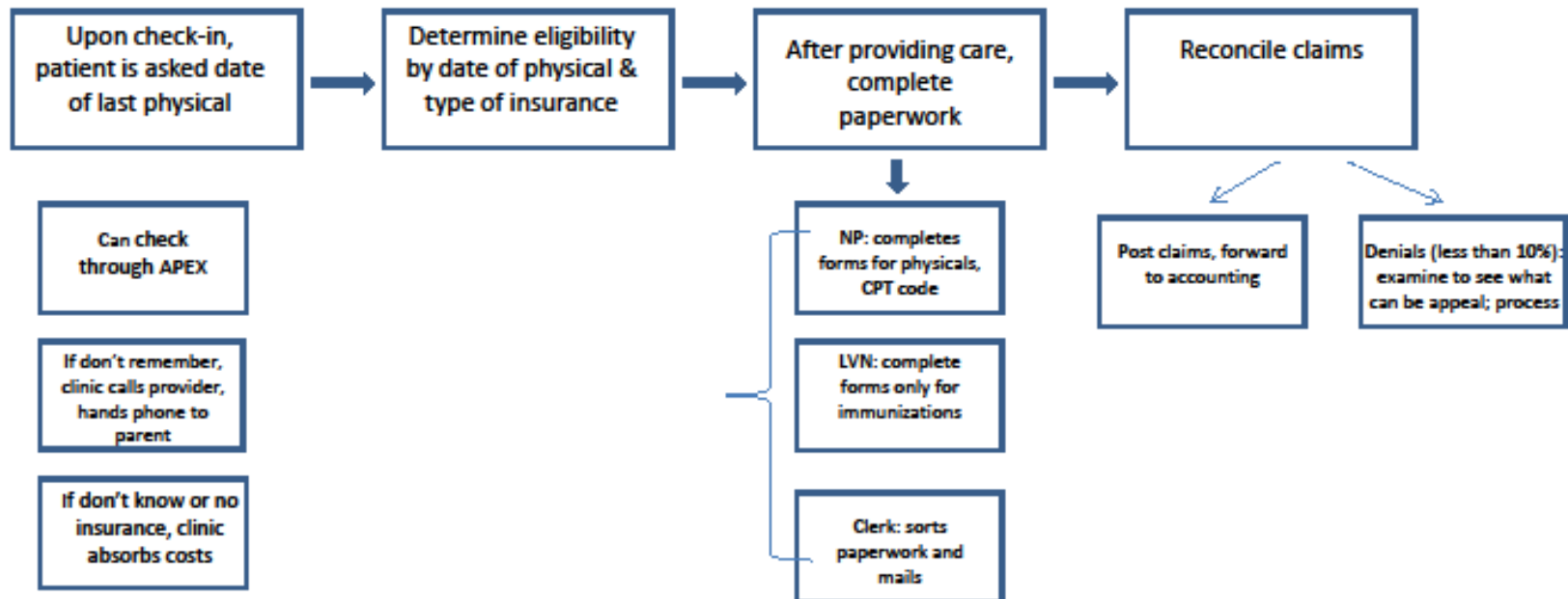
## 2012 Aug. Sep. Oct.

Walk-in 530-220-209

- Immunization
  - 1,036 shots
  - 340 children
- Physicals – 154
- Employee PPD - 109

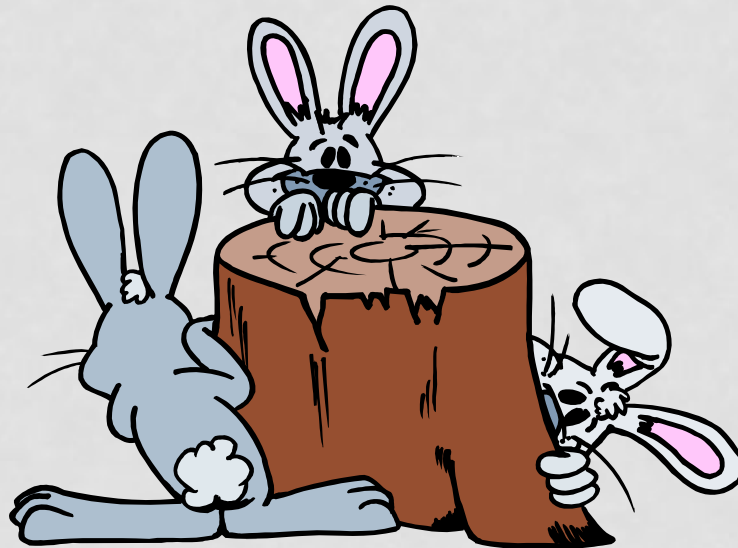


# Pomona Unified School District SBHC Flow Chart



POMONA UNIFIED SCHOOL DISTRICT

HEALTH SERVICES CLINIC



Presenter: Rosalyn Benson, RN, MSN, ACNP

[Rosalyn.benson@pusd.org](mailto:Rosalyn.benson@pusd.org) 909-397-4800 x3966